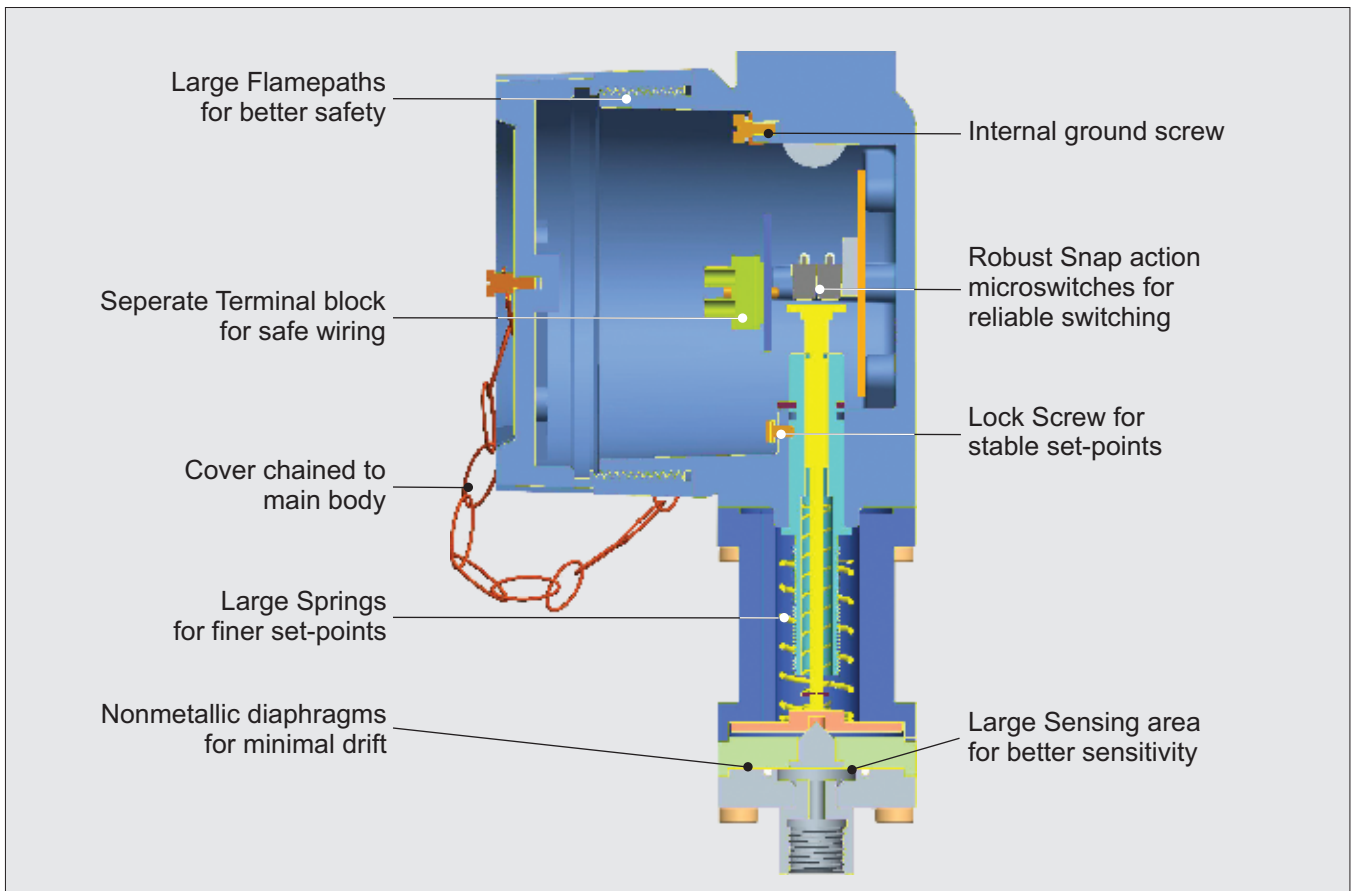


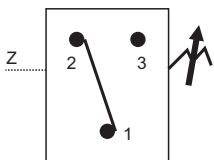
FC HIGH PROOF HIGH RANGE SWITCHES



Approximate Weight :

Pressure switches with Aluminium enclosure : 1.87 Kg.
 Pressure switches with Grey CI enclosure : 4.27 Kg.
 Pressure switches with SS enclosure : 4.42 Kg.

Electrical Connection :

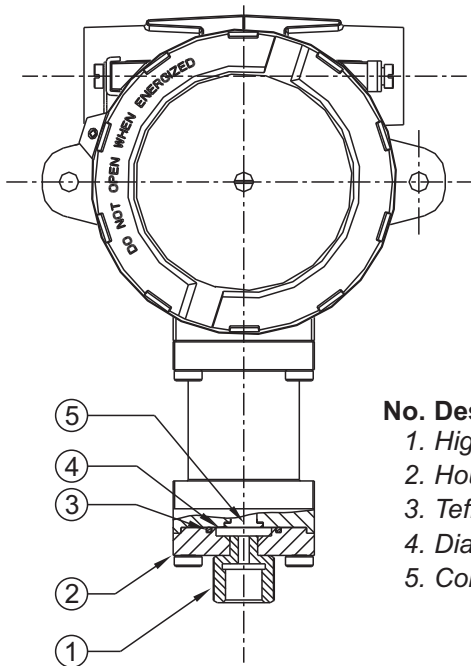


Some Applications :

High pressure gas handling systems, fire fighting systems where the maximum pressure is high and the tripping value is low.



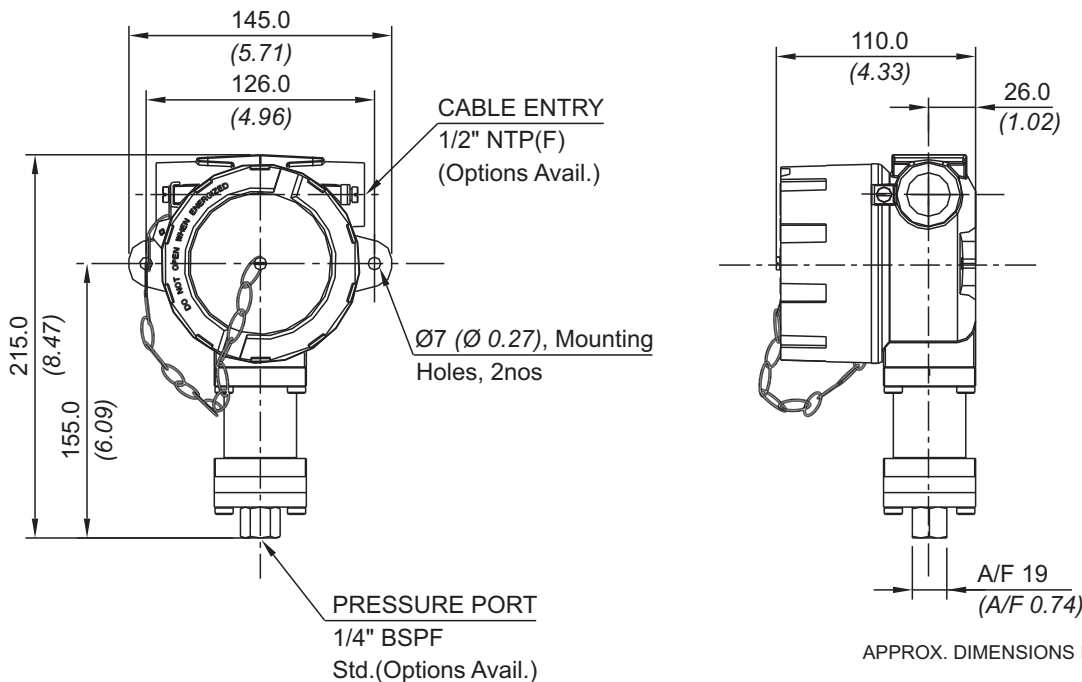
PRESSURE CAPSULE DETAILS



- No. Description**
1. High Pressure Port
 2. Housing Plate
 3. Teflon® O-Ring
 4. Diaphragm
 5. Conical Plunger

Note : *wetted parts* are mentioned in italics.

INSTALLATION DRAWING



FC HIGH PROOF HIGH RANGE SWITCHES

RANGE SELECTION TABLE

Range Code	Range bar (psi)	Differential* bar (psi)	Maximum Working Pressure bar (psi)
		Approximate Maximum for "A1" microswitch	
P01	0.1 - 1.0 (1.45 - 14.50)	0.20 (2.9)	70 (1015.26)
P02	0.1 - 1.5 (1.45 - 21.76)	0.20 (2.9)	70 (1015.26)
P03	0.2 - 2.6 (2.90 - 37.71)	0.30 (4.35)	70 (1015.26)
P04	0.2 - 3.6 (2.90 - 52.21)	0.40 (5.80)	70 (1015.26)
P07	0.5 - 7.0 (7.25 - 101.50)	0.50 (7.25)	70 (1015.26)
P10	0.5 - 10.0 (7.14 - 142.86)	0.80 (11.6)	70 (1015.26)
P15	1.0 - 15.0 (14.29 - 214.29)	1.50 (23.2)	70 (1015.26)
P30	5.0 - 25.0 (71.43 - 357.14)	1.50 (23.2)	70 (1015.26)

*Minimum differential increases with setpoint, values with neoprene diaphragm (Graphs available on request)

* Differentials of microswitches A2 through A9 will vary. Differentials for A7 are typically twice that for A1 microswitch. Please indicate specifically the differential value in enquiry/order, when it is critical in your application.

HOW TO ORDER FLAMEPROOF HIGH PROOF HIGH RANGE PRESSURE SWITCHES

Group 1	Group 2	Group 3	Group 4	Group 5	Group 6	Group 7	Group 8
Non standard allocation	Model	Cable Entry Size	Switch Type	Range Code (values in bar)	Microswitch Type	Pressure Port Material / Size	Diaphragm
<input type="checkbox"/> Reserved for non-standard options not covered in catalogue. Will be given by manufacturer, only after agreement of supply details with customer.	FC = Flameproof pressure switch, ATEX & IECEx approved, with Aluminium head as per IS/IEC 60079-1 for Gas Gr. IIC	1 = Al. head 1/2" NPT threads 2 = Al. head 3/4" NPT threads 3 = Al. head M20 x 1.5 threads 4 = Grey CI head 1/2" NPT threads 5 = Grey CI head 3/4" NPT threads 6 = Grey CI head M20 x 1.5 threads 7 = SS head 1/2" NPT threads 8 = SS head 3/4" NPT threads 9 = SS head M20 x 1.5 threads	P 1 = pressure switch, fixed differential without scale P 2 = pressure switch, fixed differential with scale in bar P 3 = pressure switch, fixed differential with scale in psi	P01 = (0.1 - 1.0) P02 = (0.1 - 1.5) P03 = (0.2 - 2.6) P04 = (0.2 - 3.6) P07 = (0.5 - 7.0) P10 = (0.5 - 10.0) P15 = (1.0 - 15.0) P30 = (5.0 - 25.0)	A1 = General purpose microswitch rated at 15A; 250 VAC A2 = Hermetically sealed for corrosive environments A3 = gold plated contacts for low voltage applications A4 = DPDT configuration A5 = for high DC ratings A6 = elements with adjustable deadband A7 = 2SPDT switching elements A9 = General purpose microswitch rated at 5A; 250 VAC * Some microswitches may not be available for particular ranges. Please check with sales office. Please refer page no. 230 for more microswitch options	S1 = SS316 / 1/4" BSP(F) S2 = SS316 / 1/4" NPT(F)	0 = Neoprene 1 = Teflon 2 = SS 316L

eg. A high proof high range flameproof switch with 1/2" NPT cable entry in aluminium housing as 1SPDT pressure switch, fixed differential without scale, having 0.1 bar to 1 bar pressure range, with 15Amp. microswitch, SS316 pressure housing with 1/4" BSP port size & SS316L diaphragm shall be specified by

Group 1	Group 2	Group 3	Group 4	Group 5	Group 6	Group 7	Group 8
□	FC	1	P1	P01	A1	S1	2

Please specify full model number to avoid ambiguity.