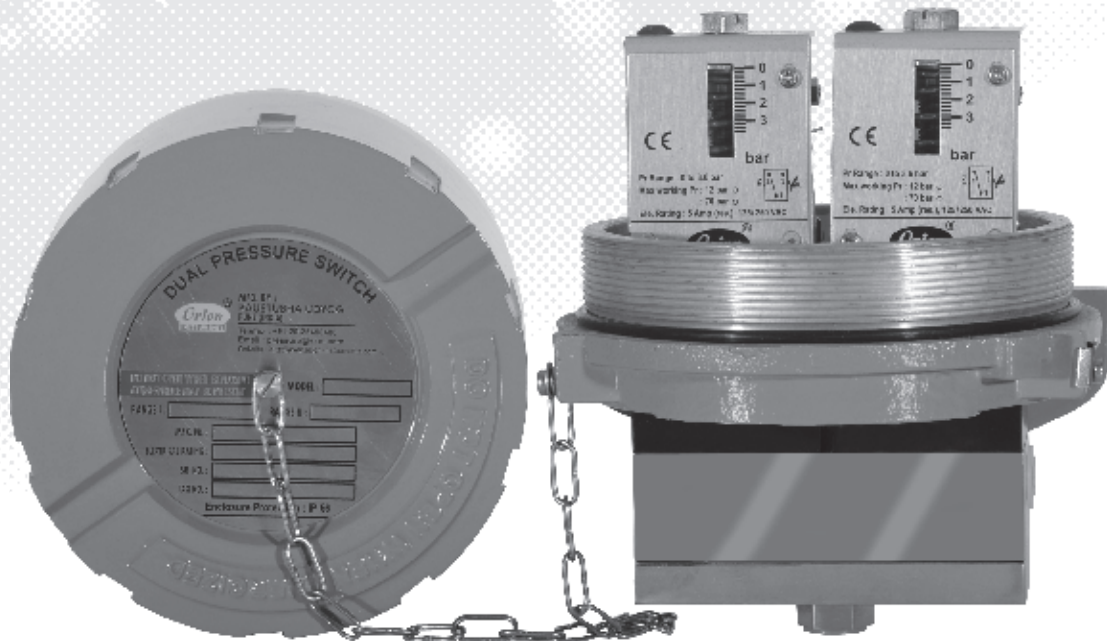




**PRESSURE SWITCHES  
PRESSURE DIFFERENCE SWITCHES  
VACUUM SWITCHES**  
From 1.5 mbar to 600 bar

# DS Dual High Range Pressure Difference Switches

## CATALOGUE



Certificate No.: FM72815



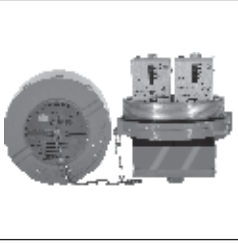
**Kaustubha Udyog** AN ISO9001:2008 COMPANY

S. No. 36/1/1, Sinhgad Road, Vadgaon Khurd,  
Near Lokmat Press, Pune 411 041 INDIA  
Tel. : +91-(0) 20-24393577 / 24393877  
Telefax: +91-(0) 20-24393577 / 25460486  
Email : [pressure@vsnl.com](mailto:pressure@vsnl.com)

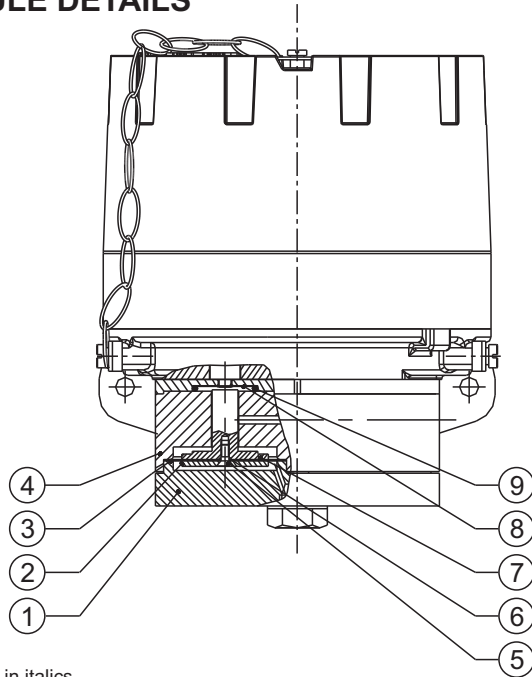
Website : <http://www.orion-instruments.com>

BULLETIN NO. : KA131028

# DS DUAL HIGH RANGE PRESSURE DIFFERENCE SWITCHES



## PRESSURE CAPSULE DETAILS

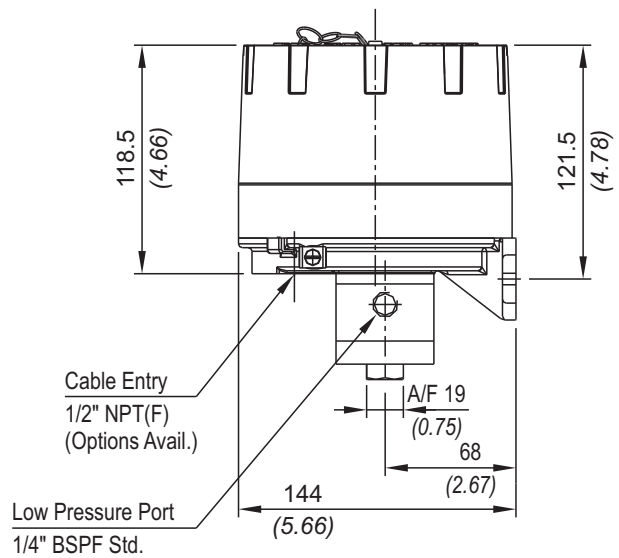
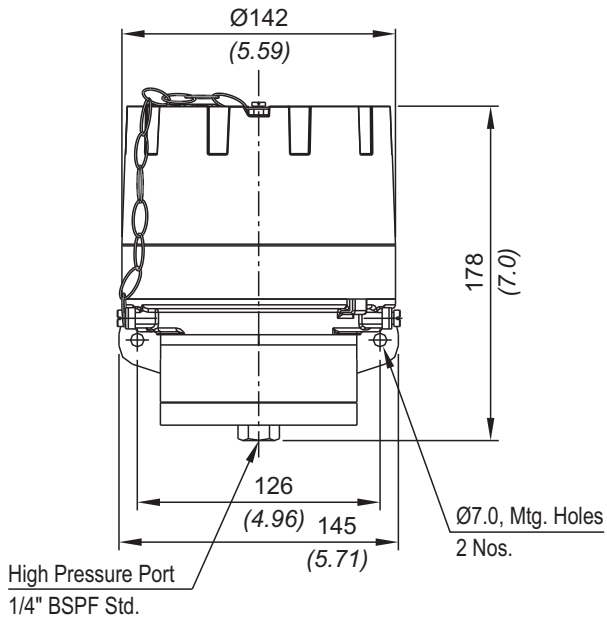


### No. Description

1. Pressure Housing
2. HP Plunger (S.S.316)
3. Diaphragm
4. Disc
5. CSK Screw (SS)
6. O-Ring (Teflon)
7. LP Plunger (S.S.316)
8. Sealing Diaphragm (Teflon)
9. Sealing O-Ring (Teflon)

Note : *wetted parts* are mentioned in italics.

## INSTALLATION DRAWING



APPROX. DIMENSIONS IN  $\frac{\text{mm}}{\text{inches}}$

## RANGE SELECTION TABLE

| Range Code | Range bar (psi)             | Differential* bar (psi)                  | Maximum Working Pressure bar (psi) |
|------------|-----------------------------|--|------------------------------------|
|            |                             | Approximate Maximum for "A1" microswitch |                                    |
| H01        | 0.1 - 1.0<br>(1.45 - 14.50) | 0.12<br>(1.74)                           | 12<br>(174.05)                     |
| H02        | 0.1 - 1.5<br>(1.45 - 21.76) | 0.20<br>(2.90)                           | 12<br>(174.05)                     |
| H03        | 0.2 - 2.6<br>(2.90 - 37.71) | 0.20<br>(2.90)                           | 12<br>(174.05)                     |
| H04        | 0.2 - 3.6<br>(2.90 - 52.21) | 0.30<br>(4.35)                           | 12<br>(174.05)                     |

\*Minimum differential increases with setpoint (Graphs available on request)

**\* Note :**

Microswitches A2 through A9 can be supplied in some ranges and differentials will vary with microswitch used. Please contact sales office for details. Please check availability of adjustable differential with sales office.

## HOW TO ORDER INDUSTRIAL DUAL HIGH RANGE PRESSURE DIFFERENCE SWITCHES

| Group 1   | Group 2   | Group 3  | Group 4  | Group 5  | Group 6   | Group 7  | Group 8                                  |
|---|---|--|--|--|---|--|--|
| Non standard allocation   | Model   | Cable Entry Size   | Switch Type  | Range Code (values in bar)   | Microswitch Type  | Pressure Port Material / Size  | Diaphragm                                |
| <input type="checkbox"/> Reserved for non-standard options not covered in catalogue. Will be given by manufacturer, only after agreement of supply details with customer. | <b>DS</b> = Dual Pressure Switch with diecast Aluminium enclosure to IP 66 as per IS 2147 | <b>1</b> = 1/2" NPT threads<br><b>2</b> = 3/4" NPT threads<br><b>3</b> = M20 X 1.5 cable gland | <b>EF2</b> = pressure difference switch, fixed differential with scale in bar<br><b>EF3</b> = pressure difference switch, fixed differential with scale in psi<br><b>*EA2</b> = pressure difference switch, adjustable differential with scale in bar<br><b>*EA3</b> = pressure difference switch, adjustable differential with scale in psi<br><small>*Available only with option A9 in Group 6</small> | <b>H01</b> = (0.1 - 1.0)<br><b>H02</b> = (0.1 - 1.5)<br><b>H03</b> = (0.2 - 2.6)<br><b>H04</b> = (0.2 - 3.6) | <b>A8</b> = General purpose microswitch rated at 5 A; 250 VAC<br><b>A7</b> = 2SPDT microswitches<br><b>A9</b> = General purpose microswitch rated @ 5A, 250 VAC | <b>S1</b> = SS316 / 1/4" BSP(F)<br><b>S2</b> = SS316 / 1/4" NPT(F)<br><b>A1</b> = Aluminium / 1/4" BSP(F)<br><b>A2</b> = Aluminium / 1/4" NPT(F) | <b>0</b> = Neoprene<br><b>1</b> = Teflon |

eg. A dual high range pressure difference switch with fixed differential having 0.1 bar to 1 bar pressure range, with 5 Amp. microswitch, SS316 pressure housing with 1/4" BSP port size & neoprene diaphragm shall be specified by

| Group 1                  | Group 2 | Group 3 | Group 4 | Group 5 | Group 6 | Group 7 | Group 8 |
|--------------------------|---------|---------|---------|---------|---------|---------|---------|
| <input type="checkbox"/> | DS      | 3       | EF2     | H01     | A8      | S1      | 0       |

Please specify full model number to avoid ambiguity.