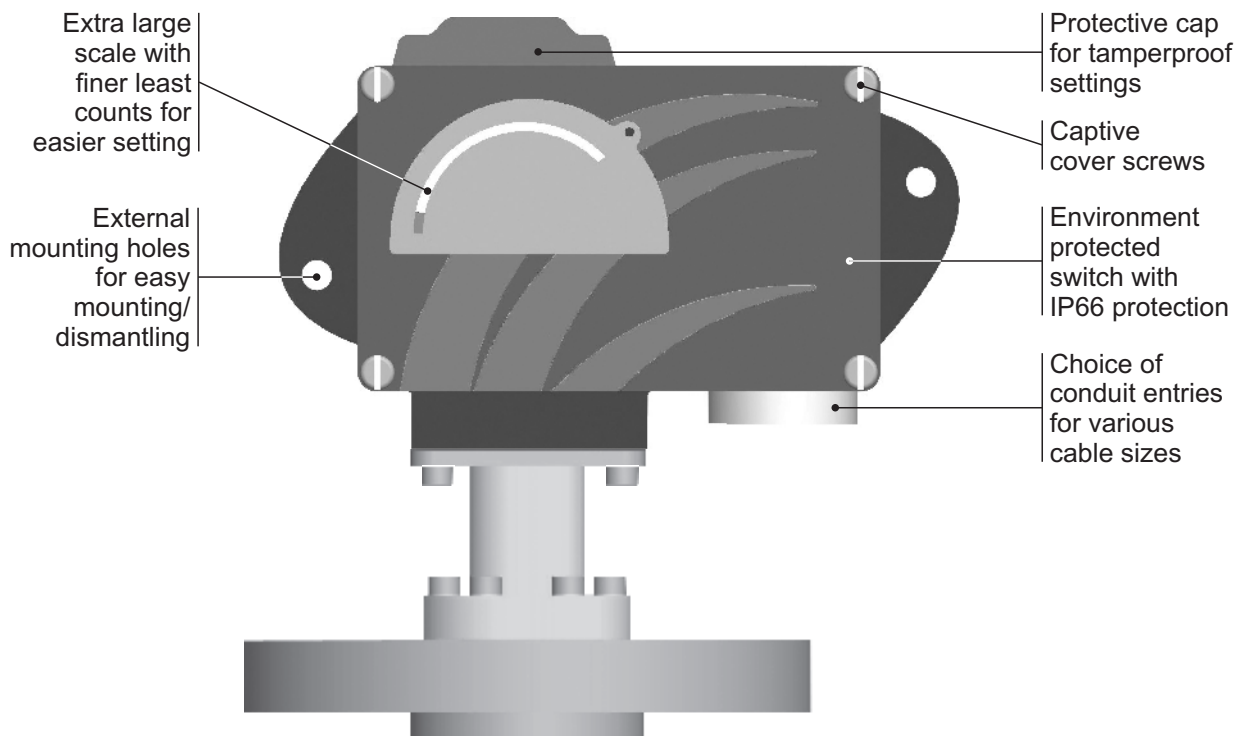
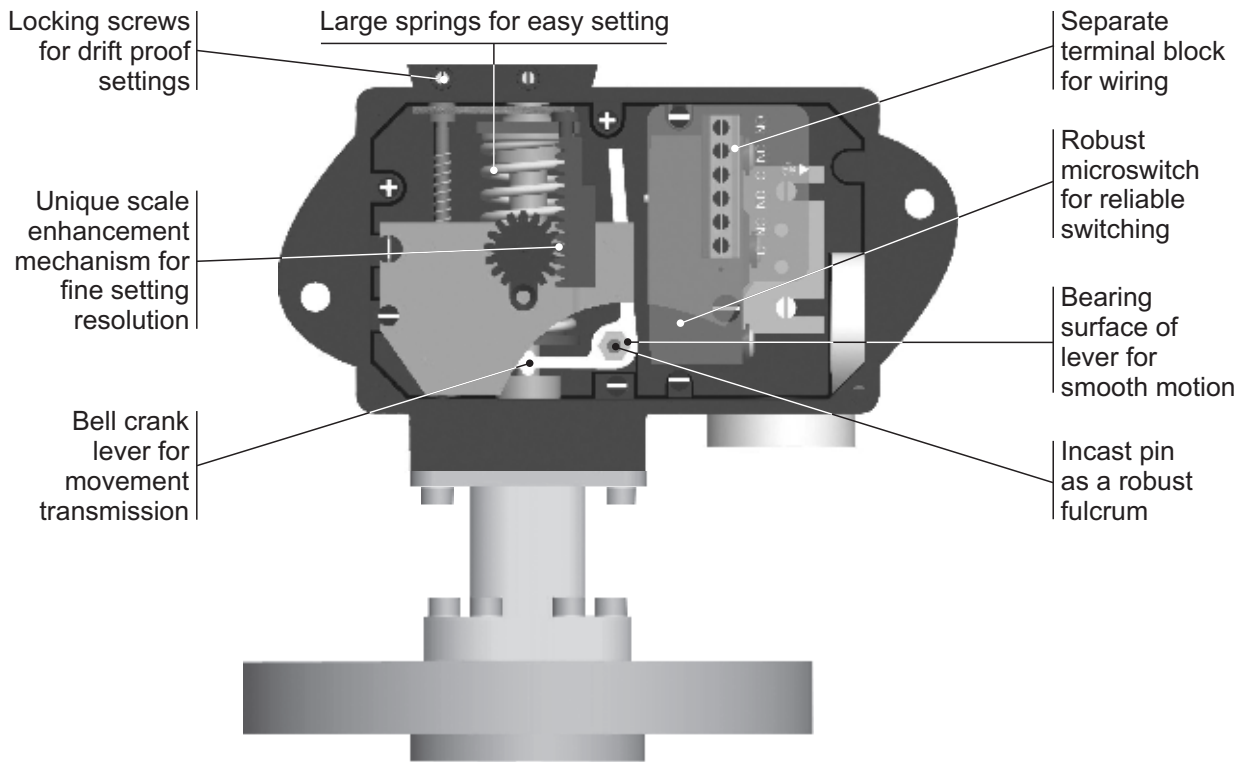


MD FLANGED PRESSURE SWITCHES

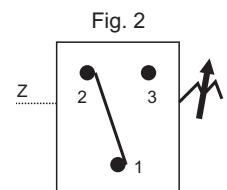


Approximate Weight : Varies with flange size. Please consult sales office.

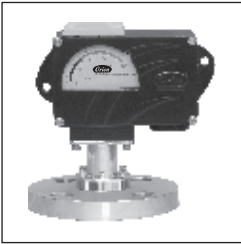
Some Applications :

In non-hazardous areas for slurry, colloidal solutions, corrosive & non-corrosive working media (unclean working media), etc.

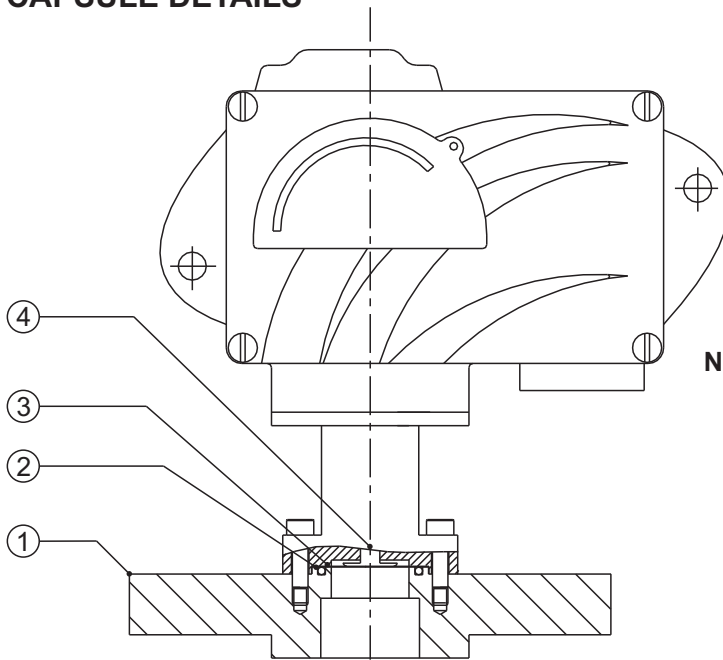
Electrical Connection :



FLANGED PRESSURE SWITCHES MD



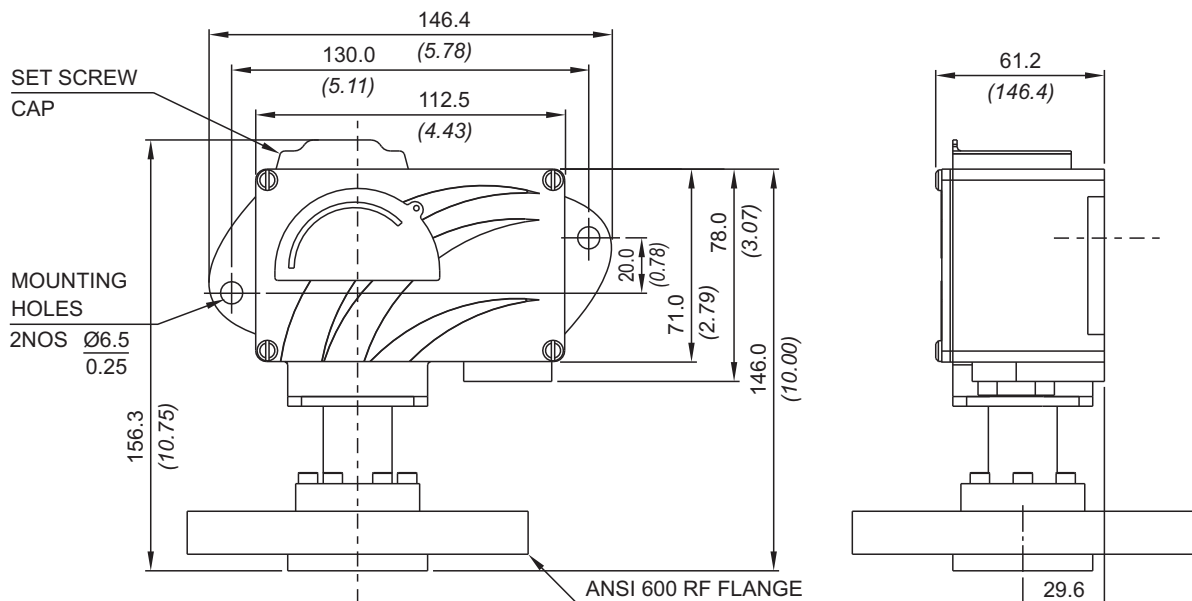
PRESSURE CAPSULE DETAILS



- No. Description**
1. ANSI 600 Flange
 2. Teflon® O-Ring
 3. Diaphragm
 4. Conical Plunger

Note : *wetted parts* are mentioned in italics.

INSTALLATION DRAWING



APPROX. DIMENSIONS IN $\frac{\text{mm}}{\text{inches}}$

MD FLANGED PRESSURE SWITCHES

RANGE SELECTION TABLE

Range Code	Range bar (psi) <i>(1.45 - 14.50)</i>	Differential* bar (psi)	Maximum Working Pressure bar (psi)
		Approximate Maximum for "A1" microswitch	
H01	0.1 - 1.0 <i>(1.45 - 14.50)</i>	0.10 <i>(1.45)</i>	As per the class of flange Please consult Sales Office in case you need clarification on availability of maximum working pressure for a particular range.
H02	0.1 - 1.5 <i>(1.45 - 21.76)</i>	0.12 <i>(1.74)</i>	
H03	0.2 - 2.6 <i>(2.90 - 37.71)</i>	0.15 <i>(2.17)</i>	
H04	0.2 - 3.6 <i>(2.90 - 52.21)</i>	0.20 <i>(2.90)</i>	
H07	0.5 - 7.0 <i>(7.25 - 101.50)</i>	0.40 <i>(5.80)</i>	
H10	0.5 - 10.0 <i>(7.25 - 145.04)</i>	0.40 <i>(5.80)</i>	
H15	1.0 - 15.0 <i>(14.50 - 217.56)</i>	0.80 <i>(11.60)</i>	
H30	5.0 - 25.0 <i>(72.52 - 362.6)</i>	0.80 <i>(11.60)</i>	
H4T	5 - 40 <i>(72.52 - 580.15)</i>	5 <i>(72.52)</i>	
H1H	10 - 100 <i>(145.04 - 1450.38)</i>	12 <i>(174.05)</i>	
H2H	7 - 200 <i>(101.53 - 2900.76)</i>	24 <i>(348.09)</i>	

* Minimum differential increases with setpoint (Graphs available on request)

* Differentials of microswitches A2 through A9 will vary. Differentials for A7 are typically twice that for A1 microswitch. Please indicate specifically the differential value in enquiry/order, when it is critical in your application.

FLANGE CODE TABLE (Please refer page no. 228 & 229 for more options)

	SS316L		Hastelloy C276		Monel		Titanium		Tantalum	
	RF*	FF*	RF*	FF*	RF*	FF*	RF*	FF*	RF*	FF*
150 #										
1" NB	AC	BS	DI	EY	GO	IE	JU	LK	NA	OQ
2" NB	AF	BV	DL	FB	GR	IH	JX	LN	ND	OT
300#										
1" NB	AI	BY	DO	FE	GU	IK	KA	LQ	NG	OW
2" NB	AL	CB	DR	FH	GX	IN	KD	LT	NJ	OZ
2500#										
1" NB	BM	DC	ES	GI	HY	JO	LE	MU	OK	QA
2" NB	BP	DF	EV	GL	IB	JR	LH	MX	ON	QD

*RF = Raised Face

*FF = Flat Face

RANGE AVAILABILITY AS PER BORE SIZES

	H01 to H04	H07	H10	H15	H30	H2T to H2H
1" NB	NA	Yes	Yes	Yes	Yes	Yes
2" NB	Yes	Yes	Yes	Yes	Yes	Yes

HOW TO ORDER INDUSTRIAL FLANGED PRESSURE SWITCHES

Group 1	Group 2	Group 3	Group 4	Group 5	Group 6	Group 7	Group 8
Non standard allocation	Model	Cable Entry Size	Switch Type ANSI flanged	Range Code (values in bar)	Microswitch Type	Flange Size and Material	Diaphragm
<input type="checkbox"/> Reserved for non-standard options not covered in catalogue. Will be given by manufacturer, only after agreement of supply details with customer.	MD = Industrial pressure switch with diecast Aluminium enclosure to IP66 as per IS2147	1 = 1/2" NPT threads 2 = 3/4" NPT threads 3 = M20 X 1.5 threads	AF1 = pressure switch, fixed differential without scale AF2 = pressure switch, fixed differential with scale in bar AF3 = pressure switch, fixed differential with scale in psi AA1 = pressure switch, adjustable differential without scale AA2 = pressure switch, adjustable differential with scale in bar AA3 = pressure switch, adjustable differential with scale in psi *Available with A9 (in group 6) only	H01 = 0.1 - 1.0 H02 = 0.1 - 1.5 H03 = 0.2 - 2.6 H04 = 0.2 - 3.6 H07 = 0.5 - 7.0 H10 = 0.5 - 10.0 H15 = 1.0 - 15.0 H30 = 5.0 - 25.0 H4T = 5 - 40 H1H = 10 - 100 H2H = 7 - 200 *Please refer page no. 230 for more microswitch options * Please refer note under Range Selection Table	A1 = General purpose microswitch rated at 15 A; 250 VAC A2 = Hermetically sealed for corrosive environments A3 = gold plated contacts for low voltage applications A4 = DPDT configuration A5 = for high DC ratings A7 = 2SPDT switching elements A9 = General purpose microswitch rated at 5 A; 250 VAC	Please select as per Flange Code Table For other classes and sizes please refer page no. 228 & 229	0 = Neoprene 1 = Teflon 2 = SS316L 3 = Hastelloy C 4 = Monel 400 5 = Titanium 6 = Tantalum

eg. A high range Industrial/ANSI flanged pressure switch with 1/2" NPT cable entry with fixed differential without scale, having 0.1 bar to 1 bar pressure range, with 15Amp. microswitch, and 2" 150# RF SS316L flange & SS316L diaphragm shall be specified by

Group 1	Group 2	Group 3	Group 4	Group 5	Group 6	Group 7	Group 8
<input type="checkbox"/>	MD	1	AF1	H01	A1	AF	2

Please specify full model number to avoid ambiguity.